

PURSE SEINER 26,66 m

Construction Year: 2015
 Designer: Estaleiros Navais de Peniche
 Builder: Estaleiros Navais de Peniche
 Hull material: GRP

Fish hold: 100 m³

Main Engine: MAN D 2842 LE 412(800 HP (588kW) @ 1800 rpm)
 Gearbox: Masson MMW400 (1/3.923)
 Propeller and shafts: Fundibrnze
 Steering system: Navipa
 Maximum speed: 12.5 nós

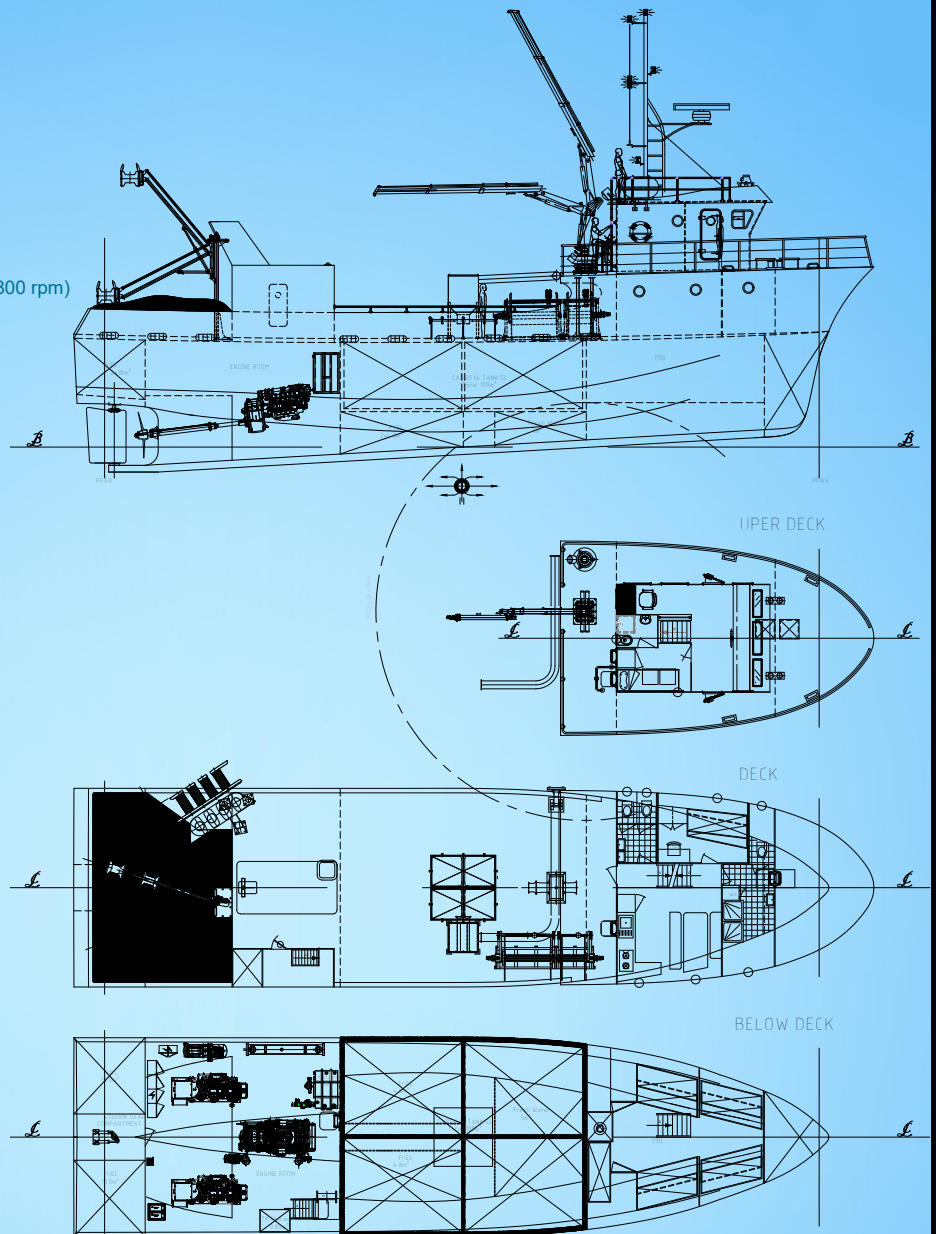
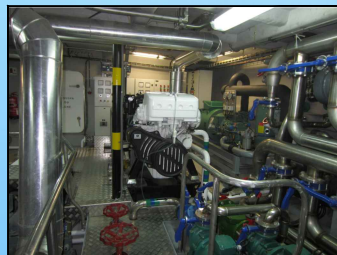
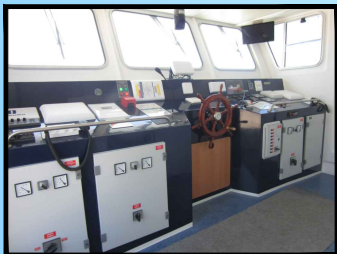
Generators Sets: 2 x John Deere 200kVA

Hydraulics supplied by: Navipa
 Hydraulics installed by: Estaleiros Navais de Peniche

Refrigerator system (RSW): ARL

Electronics (Furuno):

Aguilha Magnética
 Radio Telefone SAILOR MF/HF (model: Sailor 6310)
 2 x VHF Class D (model: Sailor 6215)
 Radar/Chart Plotter NAVNet 3D (model: Furuno MDF8)
 GPS/Plotter (model: Furuno GP-1870)
 GPS/Plotter (model: Furuno GP-33)
 Radar (model: Furuno 1715X)
 Sonar (model: Furuno CH-250)
 2x Sonda (model: Furuno FCV-295)
 Piloto Automático (model: Furuno NavPilot 700)
 Indicador de Angulo de Leme (model: FI-506)
 Sistema de intercomunicação (model: ZENITEL ETB-5)
 Epirb (model: Jotron 60 S)
 Fluxgate (model: Furuno PG-700)



CONSTRUCTION MAIN DEIMENSIONS

LENGTH OVER ALL	26.66 m
LENGTH BETWEEN PERPENDICULARS	23.81 m
BEAM	6.62 m
DEPTH	3.49 m

Estaleiros Navais de Peniche, S.A.
 Molhe Leste
 2520.620 Peniche
 PORTUGAL
 tel.: (+351) - 262 780 420
 fax: (+351) - 262 783 792
 info@enp.pt www.enp.pt